

ENERGY DATA CONDUIT

ENERGY INFORMATION ADMINISTRATION (EIA)

GENERAL

The Conduit for Energy Information Administration maintains a local copy of EIA's data, including spot prices, futures prices, and oil and gas spatial mapping tables. We provide the data designed specifically for Esri's ArcMap, Tibco's Spotfire, and Microsoft's Excel. Included are over 50 SQL Server Spatial tables for the EIA's natural gas, petroleum, other, geology, uranium, shale play, and sedimentary basin files.

CONDUIT SYSTEMS OF ACCESS

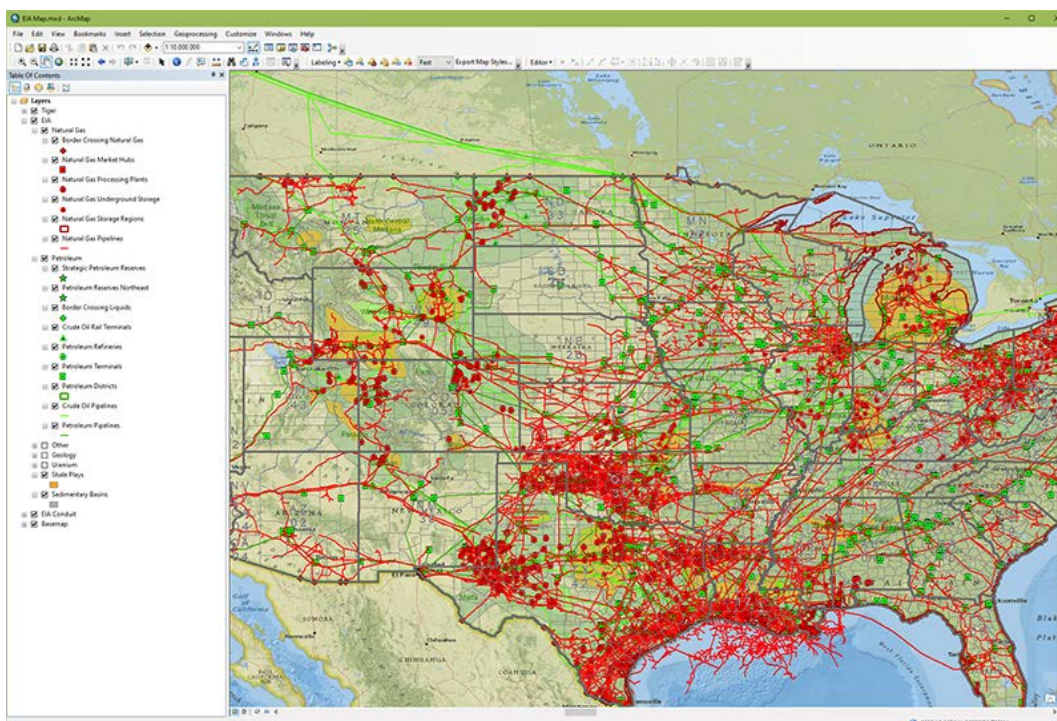
All referenced templates are in the 'EIA' folder located inside the master Conduit file folder. Please check with your administrator for the specific Conduit folder location.

THE CONDUIT MANAGED EIA DATABASE IN ARCMAP

The Conduit EIA data comes complete with a ready-to-run Esri ArcMap template for the oil and gas basin and play tables from EIA studies. Also, the map provides regularly maintained Natural Gas and Petroleum infrastructure layers. These SQL Server Spatial tables are performance-tuned and tested for ArcMap, ArcGIS Pro, ArcGIS Server, and ArcGIS Portal.

EIA MAP.MXD

The ArcMap template includes a print layout in the document for ANSI E (34" x 44") size.



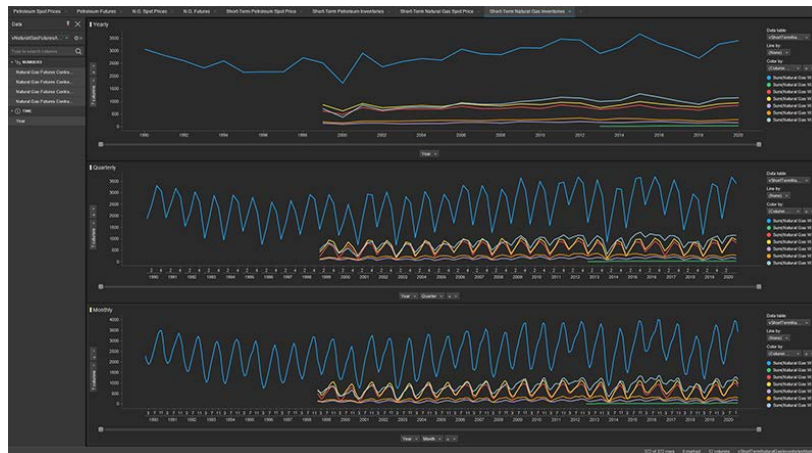
EIA DATA IN MICROSOFT EXCEL AND TIBCO SPOTFIRE

The Conduit EIA data comes complete with a ready-to-run Esri ArcMap and Tibco Spotfire templates for each available mapping table. These provide direct access to all the basin study mapping layers created and maintained by the Energy Information Administration.

EIA MONTHLY.XLSX

Year	Crude Oil with Spot Price FOB	European Brent Spot Price FOB	Los Angeles Refineries RMB Popular Standard Spot Price	Los Angeles, CA Ultra Low Sulfur Crude Diesel Spot Price	Most Refiners To Produce Spot Price FOB	New York Harbor Conventional Gasoline Regular Is
2008-09-01	70.41	72.06	2,225	2,231	2,570	1,510
2008-10-01	57.31	52.45	1,268	1,266	1,394	0,738
2008-11-01	61.22	59.50	1,131	1,166	1,166	0,616
2008-12-01	48.71	43.44	1,437	1,435	1,435	0,727
2009-01-01	50.20	48.13	1,267	1,269	1,269	0,659
2009-02-01	47.24	46.54	1,473	1,488	1,488	0,653
2009-03-01	49.15	56.18	1,275	1,423	1,423	0,658
2009-04-01	50.03	53.3	1,447	1,529	1,529	0,701
2009-05-01	49.64	48.63	2,085	1,843	1,843	0,740
2009-06-01	48.15	44.84	1,833	1,767	1,767	0,752
2009-07-01	71.05	73.11	2,111	1,74	1,74	0,766
2009-08-01	68.41	67.60	2,084	1,822	1,822	0,740
2009-09-01	73.72	72.77	2,052	1,767	1,767	1,008
2009-10-01	77.66	74.66	1,879	2,084	2,084	1,076
2009-11-01	74.47	74.46	2,034	1,979	1,979	1,117
2009-12-01	78.31	74.17	2,077	2,041	2,041	1,132
2010-01-01	76.75	73.75	2,071	2,073	2,073	1,204
2010-02-01	78.2	74.83	2,227	2,042	2,042	1,156
2010-03-01	84.29	84.82	2,327	2,325	2,325	1,117
2010-04-01	79.74	75.01	2,121	2,121	2,121	1,282
2010-05-01	76.34	74.76	2,139	2,139	2,139	1,037
2010-06-01	76.16	75.36	2,281	2,281	2,281	1,161
2010-07-01	76.4	77.04	2,178	2,141	2,141	1,072
2010-08-01	75.24	77.44	2,066	1,937	1,937	1,112
2010-09-01	81.89	82.67	2,229	2,128	2,128	1,224
2010-10-01	84.25	85.28	2,245	2,305	2,305	1,254
2010-11-01	81.35	81.45	2,42	2,353	2,353	1,276
2010-12-01	83.17	86.12	2,447	2,415	2,415	1,348
2011-01-01	88.74	101.72	2,764	2,853	2,853	1,179
2011-02-01	102.84	114.04	3,131	3,233	3,233	1,397
2011-03-01	109.11	121.26	3,173	3,327	3,327	1,454
2011-04-01	105.9	114.99	3,055	3,134	3,134	1,523
2011-05-01	96.26	113.83	2,851	3,074	3,074	1,524
2011-06-01	93.3	118.97	2,948	3,114	3,114	1,528
2011-07-01	91.13	118.13	2,839	3,151	3,151	1,528
2011-08-01	85.52	112.83	2,937	3,011	3,011	1,526
2011-09-01	81.22	109.55	2,763	2,825	2,825	1,472
2011-10-01	87.35	110.77	2,797	3,120	3,120	1,458
2011-11-01	86.26	107.17	2,762	2,761	2,761	1,395
2011-12-01	106.27	110.89	2,742	3,241	3,241	1,274
2012-01-01	102.2	115.13	3,061	3,240	3,240	1,121
2012-02-01	94.96	124.45	3,183	3,184	3,184	1,241
2012-03-01	103.52	115.75	3,25	3,222	3,222	1,136
2012-04-01	94.96	118.44	3,244	3,097	3,097	0,954
2012-05-01	82.3	95.16	2,826	2,654	2,654	0,728
2012-06-01	87.1	102.82	2,819	2,844	2,844	0,874
2012-07-01	84.11	113.88	3,129	3,225	3,225	0,761
2012-08-01	84.11	113.88	3,129	3,225	3,225	0,761
2012-09-01	89.49	111.77	3,135	3,226	3,226	0,762
2012-10-01	89.49	109.66	2,782	2,951	2,951	0,829
2012-11-01	87.86	109.49	2,615	2,971	2,971	0,797
2012-12-01	84.76	112.11	2,1	3,144	3,144	0,868
2013-01-01	81.13	116.05	1,330	3,239	3,239	0,862
2013-02-01	81.74	108.87	2,027	2,827	2,827	0,895
2013-03-01	82.02	102.25	2,066	2,708	2,708	0,719
2013-04-01	84.21	102.56	2,099	2,646	2,646	0,702
2013-05-01	85.77	102.72	2,021	2,744	2,744	0,783
2013-06-01	104.47	107.93	3,041	3,041	3,041	0,732
2013-07-01	104.57	111.28	3,025	3,033	3,033	1,004

EIA PRICING & FUTURES.DXP



Support Email:
support@conduitresources.com

