

# ENERGY DATA CONDUIT IHS MARKIT

## GENERAL

The Conduit for IHS Markit maintains a local copy of IHS Markit's permit, completion, rig, lease, production, and well data. All this information is available in our custom Well Finder application designed for fast searching and exporting of the data. This simple to use and intuitive application is available for your entire company without the need for individual logins. We also provide the data designed specifically for Esri's ArcMap, Tibco's Spotfire, and Microsoft's Excel, complete with ready-to-run templates built using SQL Server native spatial geometries.

## CONDUIT WELL FINDER APPLICATION FOR IHS MARKIT

It is easy to see why everyone loves our Conduit Well Finder. This is your single source for searching all your entitled IHS Markit data backed by daily updates. There simply isn't a better way to query, view, and export large amounts of data. Conduit Well Finder includes custom aggregations of completion and production data that are analytics-ready in the form of our Production Abstracts (for both entity and well level) and our Well Treatment Abstracts.

The screenshot displays the Conduit Well Finder application interface. On the left, there are several filter panels: 'Method' (with 'All' selected), 'State / County' (listing states like Alaska, Arkansas, etc.), 'Primary Product' (with 'Oil' selected), 'Status' (with 'Active' selected), and 'Well Attributes' (with various checkboxes). The main window shows a table of wells with columns for UWI, Well Name, Status, Symbol, Hole, State, County, Operator, Permit, Permitted, Spud, Completed, Abandoned, Objective, Products, Recent Prods, and GOR. A map on the right shows the location of the selected well in the Gulf Coast Basin of Alabama. Below the map, a 'Selected Well' summary provides details for well UWI: 01-035-20252-0000, including its name (BOOTH & CADEY 29-6 #1), state (Alabama), county (CONECUH), location (4N 13E 20 NW SE NW), and other technical specifications.



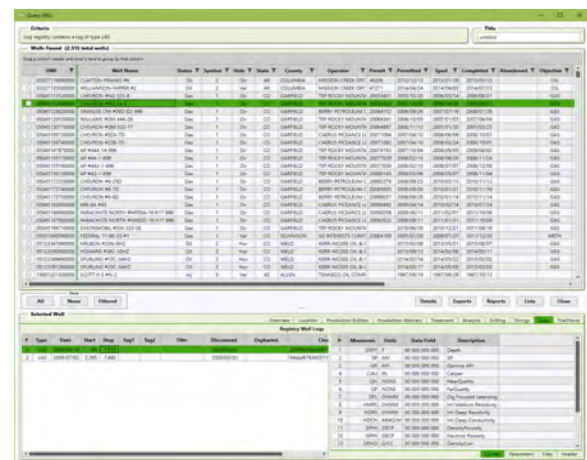
## WELL FINDER'S STATE MODULE

The Well Finder provides a direct link between IHS Markit data and Oil & Gas State Regulatory agency websites. These include direct loading of specific documents, logs, production entities, and wells within each state website. Where available, direct links to the state's maintained web mapping sites are included.

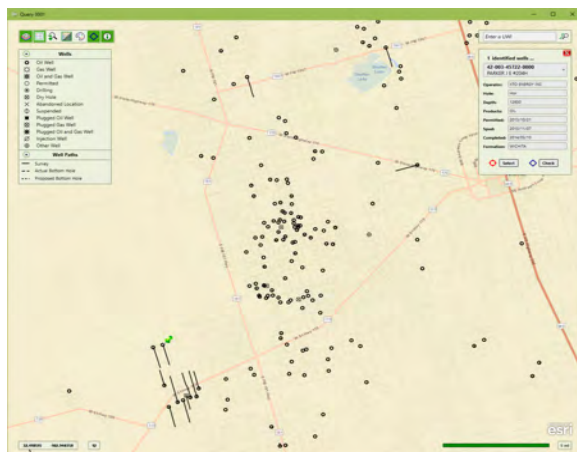


## WELL FINDER WITH LOG FINDER

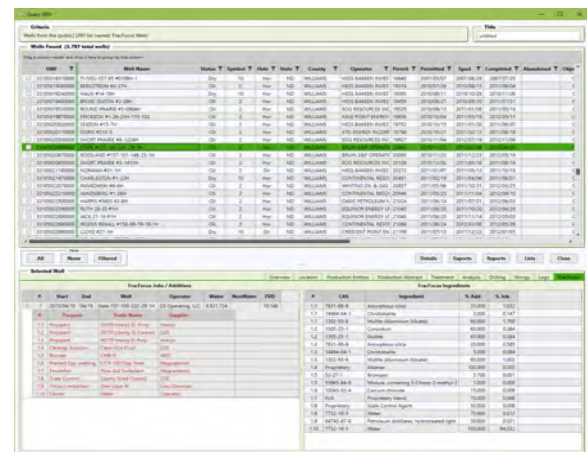
When you run our Well Finder and Well Log Registry simultaneously, you gain the advantage of seeing all your proprietary logs and metadata for your IHS Markit query selection. We automatically integrate your Well Log Registry information with IHS Markit data within Well Finder.



## WELL FINDER MAPPING



## WELL FINDER WITH FRACFOCUS



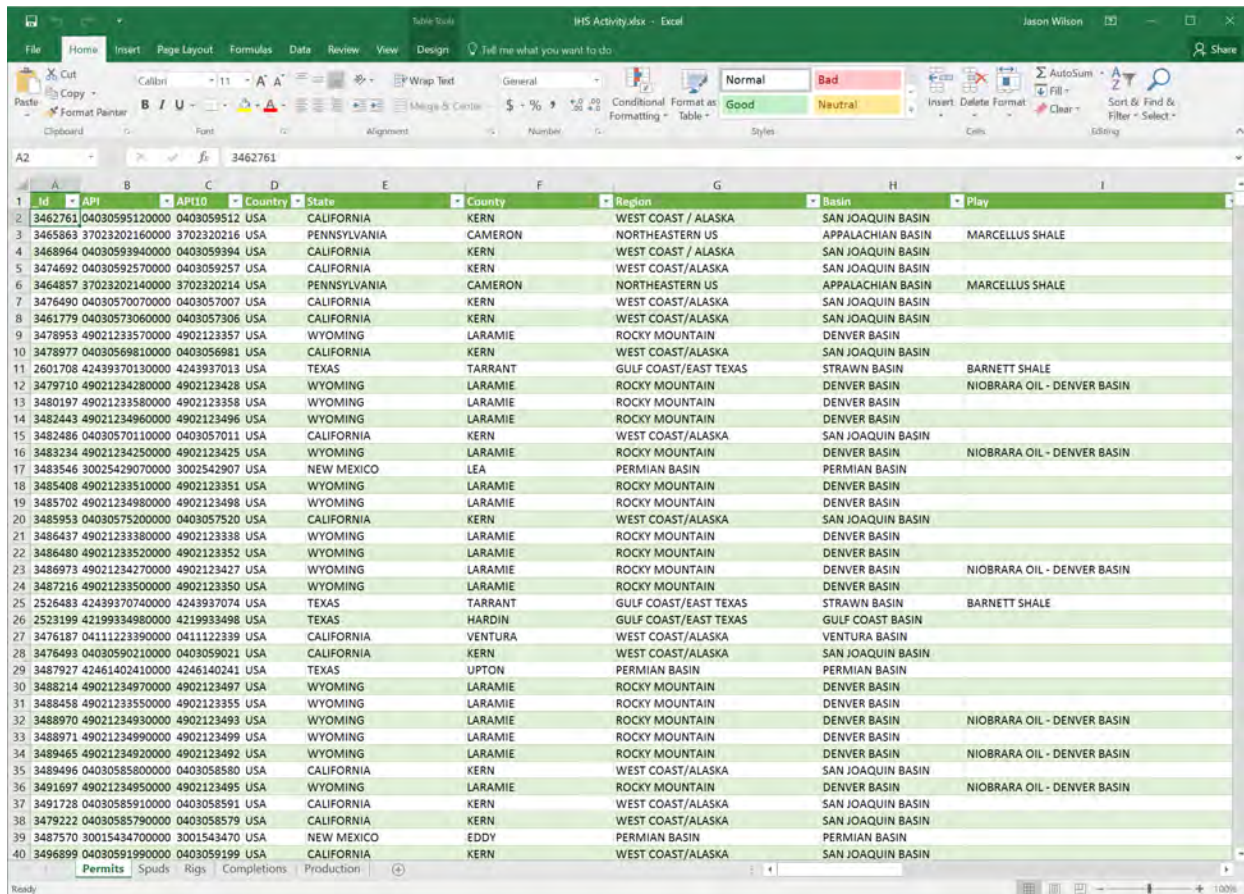
## CONDUIT SYSTEMS OF ACCESS

All referenced templates are in the 'IHS' folder located inside the master Conduit file folder. Please check with your administrator for the specific Conduit folder location.

## IHS MARKIT DATA FOR EXCEL

The Conduit for IHS Markit data comes complete with auto-updated Microsoft Excel and Tibco Spotfire templates for the recent permit, spud, rig, completion, and production activity. These are updated daily in SQL Server and refresh automatically upon launching the template.

## IHS ACTIVITY.XLSX



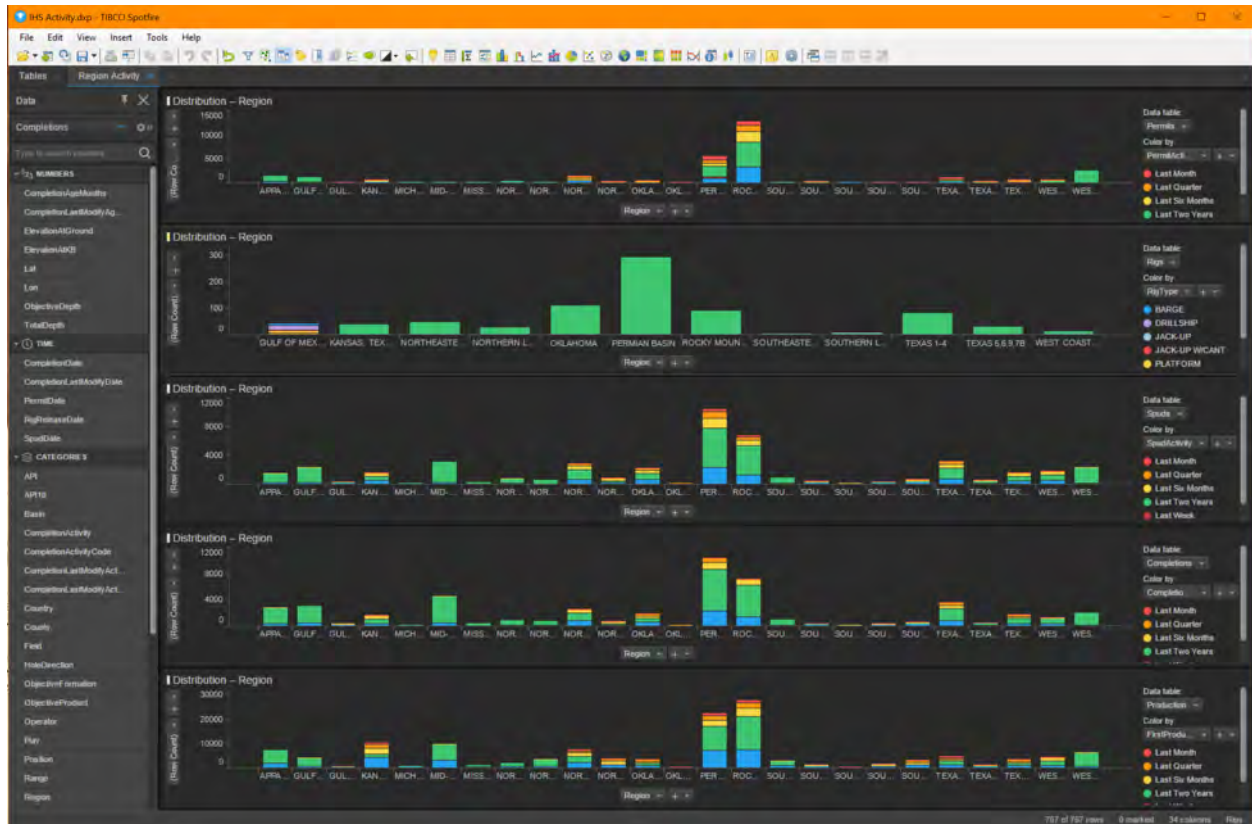
Id	API	API10	Country	State	County	Region	Basin	Play
3462761	04030595120000	0403059512	USA	CALIFORNIA	KERN	WEST COAST / ALASKA	SAN JOAQUIN BASIN	
3465863	37023202160000	3702320216	USA	PENNSYLVANIA	CAMERON	NORTHEASTERN US	APPALACHIAN BASIN	MARCELLUS SHALE
3468964	04030593940000	0403059394	USA	CALIFORNIA	KERN	WEST COAST / ALASKA	SAN JOAQUIN BASIN	
3474692	04030592570000	0403059257	USA	CALIFORNIA	KERN	WEST COAST/ALASKA	SAN JOAQUIN BASIN	
3464857	37023202140000	3702320214	USA	PENNSYLVANIA	CAMERON	NORTHEASTERN US	APPALACHIAN BASIN	MARCELLUS SHALE
3476490	04030570070000	0403057007	USA	CALIFORNIA	KERN	WEST COAST/ALASKA	SAN JOAQUIN BASIN	
3461779	04030573060000	0403057306	USA	CALIFORNIA	KERN	WEST COAST/ALASKA	SAN JOAQUIN BASIN	
3478953	49021233570000	4902123357	USA	WYOMING	LARAMIE	ROCKY MOUNTAIN	DENVER BASIN	
3478977	04030569810000	0403056981	USA	CALIFORNIA	KERN	WEST COAST/ALASKA	SAN JOAQUIN BASIN	
2601708	42439370130000	4243937013	USA	TEXAS	TARRANT	GULF COAST/EAST TEXAS	STRAWN BASIN	BARNETT SHALE
3479710	49021234280000	4902123428	USA	WYOMING	LARAMIE	ROCKY MOUNTAIN	DENVER BASIN	NIORARA OIL - DENVER BASIN
3480197	49021233580000	4902123358	USA	WYOMING	LARAMIE	ROCKY MOUNTAIN	DENVER BASIN	
3482443	49021234960000	4902123496	USA	WYOMING	LARAMIE	ROCKY MOUNTAIN	DENVER BASIN	
3482486	04030570110000	0403057011	USA	CALIFORNIA	KERN	WEST COAST/ALASKA	SAN JOAQUIN BASIN	
3483234	49021234250000	4902123425	USA	WYOMING	LARAMIE	ROCKY MOUNTAIN	DENVER BASIN	NIORARA OIL - DENVER BASIN
3483546	30025429070000	3002542907	USA	NEW MEXICO	LEA	PERMIAN BASIN	PERMIAN BASIN	
3485408	49021233510000	4902123351	USA	WYOMING	LARAMIE	ROCKY MOUNTAIN	DENVER BASIN	
3485702	49021234980000	4902123498	USA	WYOMING	LARAMIE	ROCKY MOUNTAIN	DENVER BASIN	
3485953	04030575200000	0403057520	USA	CALIFORNIA	KERN	WEST COAST/ALASKA	SAN JOAQUIN BASIN	
3486437	49021233800000	4902123380	USA	WYOMING	LARAMIE	ROCKY MOUNTAIN	DENVER BASIN	
3486480	49021233520000	4902123352	USA	WYOMING	LARAMIE	ROCKY MOUNTAIN	DENVER BASIN	
3486973	49021234270000	4902123427	USA	WYOMING	LARAMIE	ROCKY MOUNTAIN	DENVER BASIN	NIORARA OIL - DENVER BASIN
3487216	49021233500000	4902123350	USA	WYOMING	LARAMIE	ROCKY MOUNTAIN	DENVER BASIN	
2526483	42439370740000	4243937074	USA	TEXAS	TARRANT	GULF COAST/EAST TEXAS	STRAWN BASIN	BARNETT SHALE
2523199	42199334980000	4219933498	USA	TEXAS	HARDIN	GULF COAST/EAST TEXAS	GULF COAST BASIN	
3476187	04111223390000	0411122339	USA	CALIFORNIA	VENTURA	WEST COAST/ALASKA	VENTURA BASIN	
3476493	04030590210000	0403059021	USA	CALIFORNIA	KERN	WEST COAST/ALASKA	SAN JOAQUIN BASIN	
3487927	42461402410000	4246140241	USA	TEXAS	UPTON	PERMIAN BASIN	PERMIAN BASIN	
3488214	49021234970000	4902123497	USA	WYOMING	LARAMIE	ROCKY MOUNTAIN	DENVER BASIN	
3488458	49021233550000	4902123355	USA	WYOMING	LARAMIE	ROCKY MOUNTAIN	DENVER BASIN	
3488970	49021234930000	4902123493	USA	WYOMING	LARAMIE	ROCKY MOUNTAIN	DENVER BASIN	NIORARA OIL - DENVER BASIN
3488971	49021234990000	4902123499	USA	WYOMING	LARAMIE	ROCKY MOUNTAIN	DENVER BASIN	
3489465	49021234920000	4902123492	USA	WYOMING	LARAMIE	ROCKY MOUNTAIN	DENVER BASIN	NIORARA OIL - DENVER BASIN
3489496	04030585800000	0403058580	USA	CALIFORNIA	KERN	WEST COAST/ALASKA	SAN JOAQUIN BASIN	
3491697	49021234950000	4902123495	USA	WYOMING	LARAMIE	ROCKY MOUNTAIN	DENVER BASIN	NIORARA OIL - DENVER BASIN
3491728	04030585910000	0403058591	USA	CALIFORNIA	KERN	WEST COAST/ALASKA	SAN JOAQUIN BASIN	
3479222	04030585790000	0403058579	USA	CALIFORNIA	KERN	WEST COAST/ALASKA	SAN JOAQUIN BASIN	
3487570	30015434700000	3001543470	USA	NEW MEXICO	EDDY	PERMIAN BASIN	PERMIAN BASIN	
3496899	04030591990000	0403059199	USA	CALIFORNIA	KERN	WEST COAST/ALASKA	SAN JOAQUIN BASIN	



## IHS MARKIT DATA FOR SPOTFIRE

We provide a Tibco Spotfire template that loads our compiled Conduit Well Online with pre-built completion and production aggregations. This template loads and refreshes the data in Spotfire upon launching the template pulling new data directly from the Conduit updated SQL Server database. Other templates include Activity and different project level starting prompts.

## IHS ACTIVITY.DXP



---

### IHS BASIN & HOLE DIRECTION PROMPT.DXP

This template prompts you to choose 1 basin and 1 hole direction type (Directional, Horizontal, Vertical, etc.) and includes monthly production.

---

### IHS CONDUIT WELLS ONELINE BASIN PROMPT.DXP

This template prompts you to choose 1 basin and includes a single oneline view that encompasses our entire WellTreatmentAbstracts and ProdnWellAbstracts tables for cross plotting completions and production data. This template also loads monthly production on demand for selected/marked wells and plots them on a normalized month count.

---

### IHS FIELD PROMPT.DXP

This template prompts you to choose up to 10 fields and includes monthly production.

---

### IHS OPERATOR PROMPT.DXP

This template prompts you to choose up to 10 operators and includes monthly production.

---

### IHS RIGS OVERVIEW.DXP

This template loads every rig in the Rigs table if you subscribe from IHS.

---

### IHS STATE & COUNTY PROMPT.DXP

This template prompts you to choose up to 3 states and up to 10 counties and includes monthly production.

---

### IHS WELLS OVERVIEW.DXP

This template loads every well in the Mapping.WellsBase table for your entitlement coverage. This may take a few minutes to load all 4.8 million wells.



## IHS MARKIT DATA FOR ARCGIS AND ARCPRO

The ArcMap and ArcGIS Pro templates for IHS are built on a series of mapping tables and views in the IHS SQL Server database. The mapping templates are built on SQL Server Spatial data tables stored in WGS84 and are specifically engineered to work in ArcMap, ArcGIS Pro, ArcGIS Pro 3D Scene, ArcGIS Server and Portal.

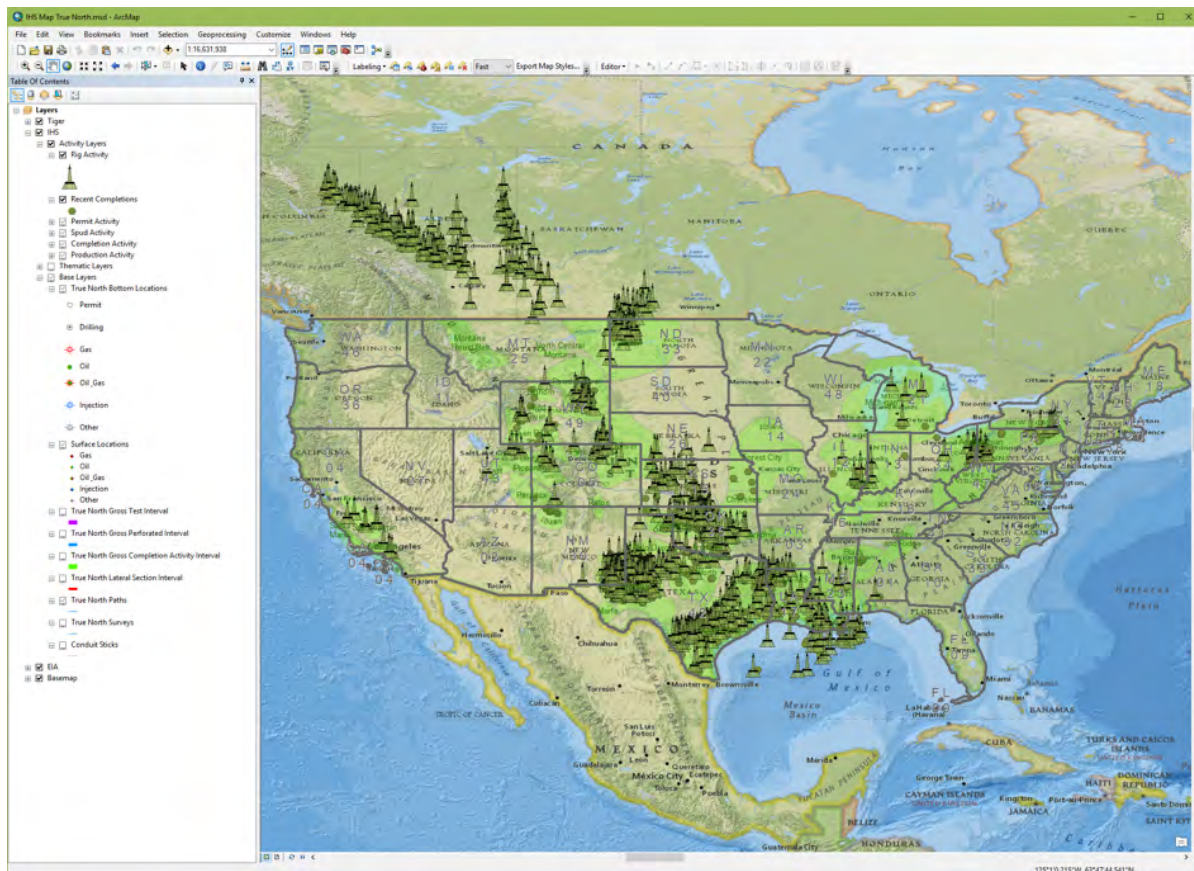
## ARCMAP

### IHS MAP.MXD

The ArcMap template includes a print layout in the document for ANSI E (34" x 44") size.

### IHS MAP TRUE NORTH.MXD

This ArcMap template contains the same data as the Map IHS.mxd with the additional layers in that have been true north normalized; Bottom Hole Locations, Surveys, Paths, Lateral Sections, CompActivity Intervals, Perforated Gross Intervals, and Tested Gross Intervals.



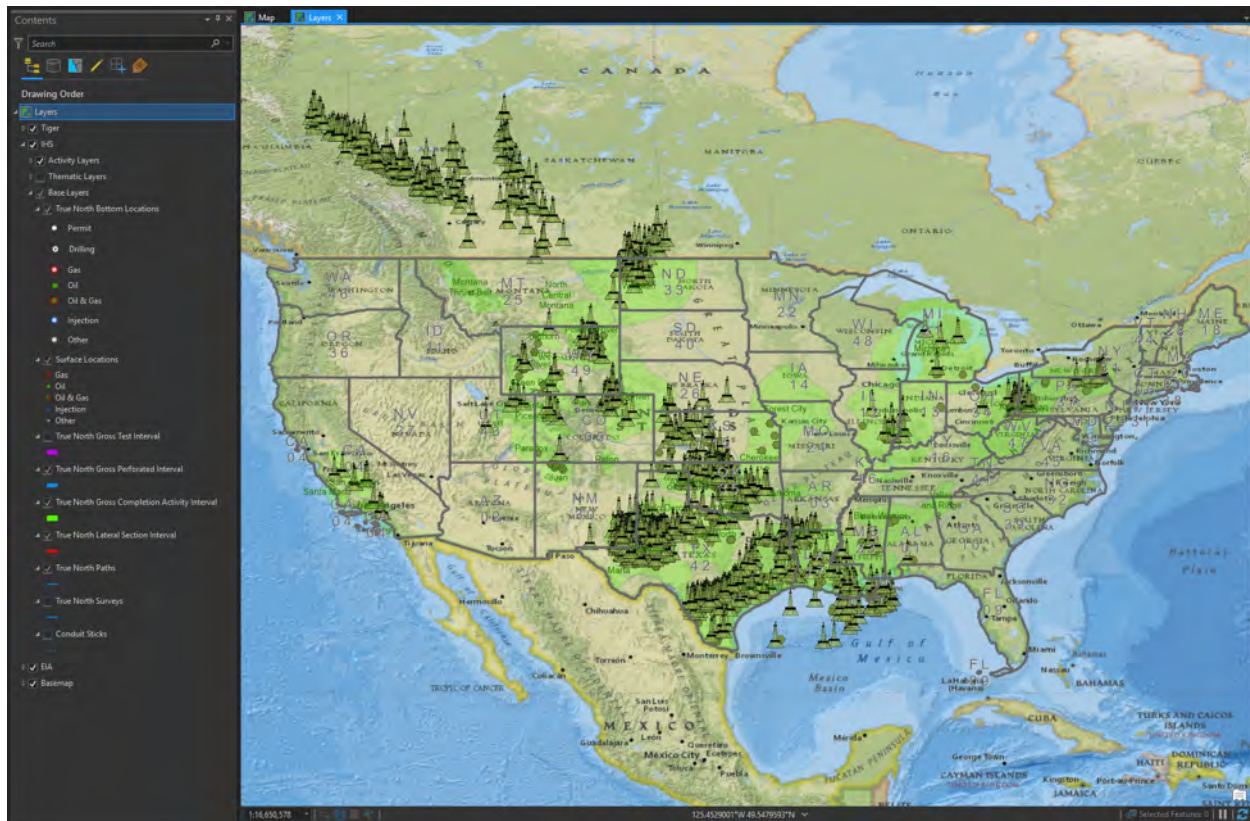
## ARCGIS PRO

### IHS MAP.APRX

The ArcGIS Pro template loads the same data as the ArcMap template pre-connected to the DrillingInfo database.

### IHS MAP TRUE NORTH.APRX

This ArcGIS Pro template contains the same data as the Map IHS.aprx with the additional layers in that have been true north normalized; Bottom Hole Locations, Surveys, Paths, Lateral Sections, CompActivity Intervals, Perforated Gross Intervals, and Tested Gross Intervals.

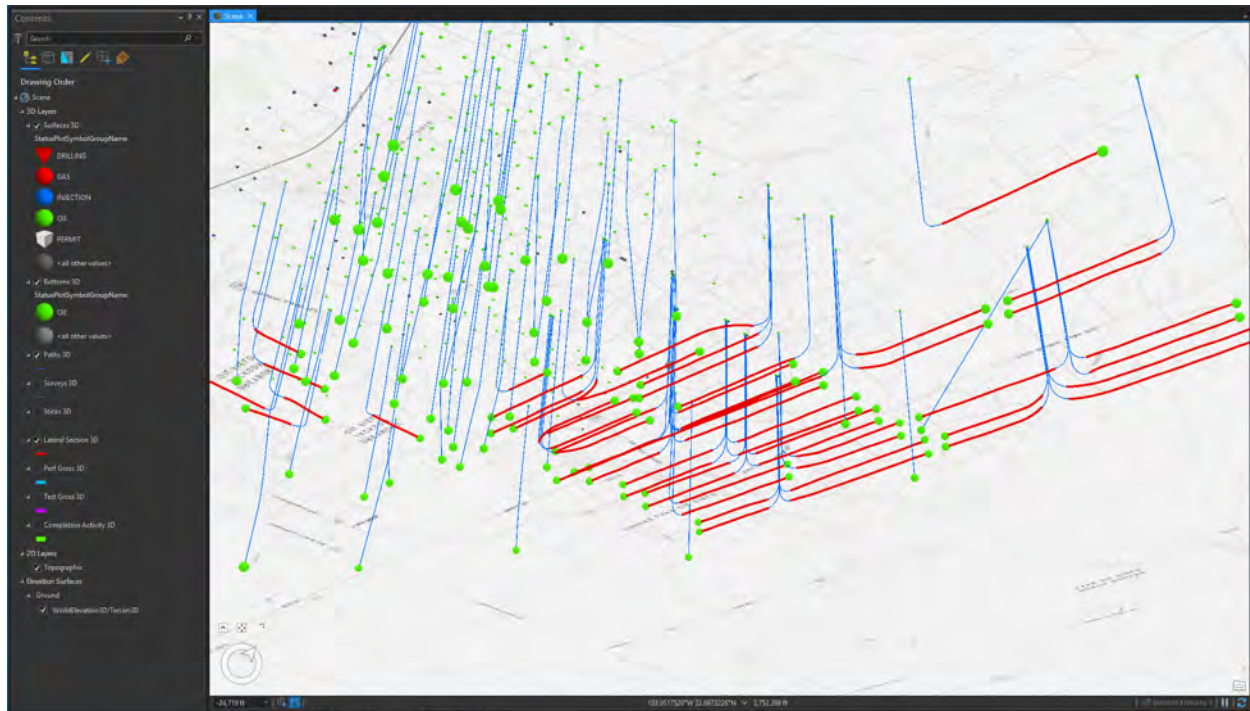


## ARCGIS PRO 3D SCENE

### IHS MAP 3D SCENE.APRX

This ArcGIS Pro template loads a small subset of 3D enabled spatial data in an ArcGIS pro global scene for the Cedar Lake field in southern New Mexico.

ArcGIS Pro needs to be configured to view data in the subsurface as it is not enabled by default.

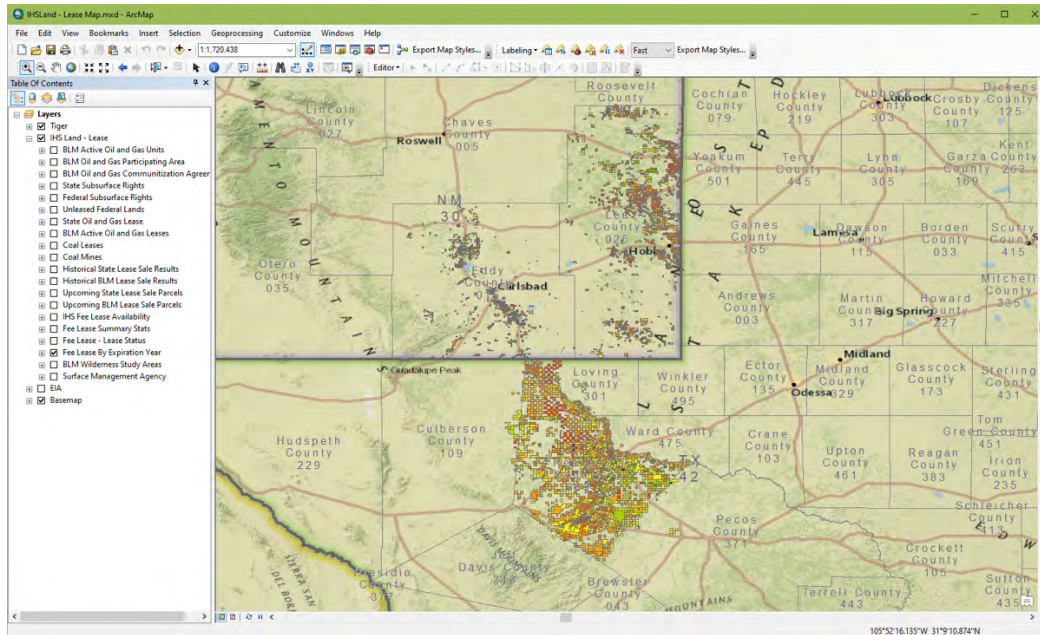




## IHS MARKIT LAND GRID AND FEE LEASE DATA FOR ARCMAP/ARCGIS PRO

The Conduit for IHS Markit Land data comes complete with a ready-to-run Esri ArcMap templates for all your entitled grid and lease data. These datasets are maintained in SQL Server Spatial tables and are performance-tuned and tested for ArcMap, ArcGIS Pro, ArcGIS Server, and Portal.

### ARCMAP



### IHSLAND - GRID MAP.APRX

### IHSLAND - GRID MAP.MXD

The ArcMap template includes a print layout in the document for ANSI E (34" x 44") size.

### IHSLAND - LEASE MAP.APRX

### IHSLAND - LEASE MAP.MXD

The ArcMap template includes a print layout in the document for ANSI E (34" x 44") size.

SUPPORT EMAIL:

[support@conduitresources.com](mailto:support@conduitresources.com)

