

ENERGY DATA CONDUIT PDS FRAC INTERFERENCE EXCHANGE

GENERAL

The Conduit for PDS Frac Interference Exchange provides comprehensive access to your shared hydraulic fracturing information fully managed in a local SQL Server database on your network. We provide the data designed specifically for Esri's ArcMap, Tibco's Spotfire, and Microsoft's Excel complete with ready-to-run templates built using SQL Server native spatial geometries.

CONDUIT SYSTEMS OF ACCESS DESIGNED FOR PDS FRAC X

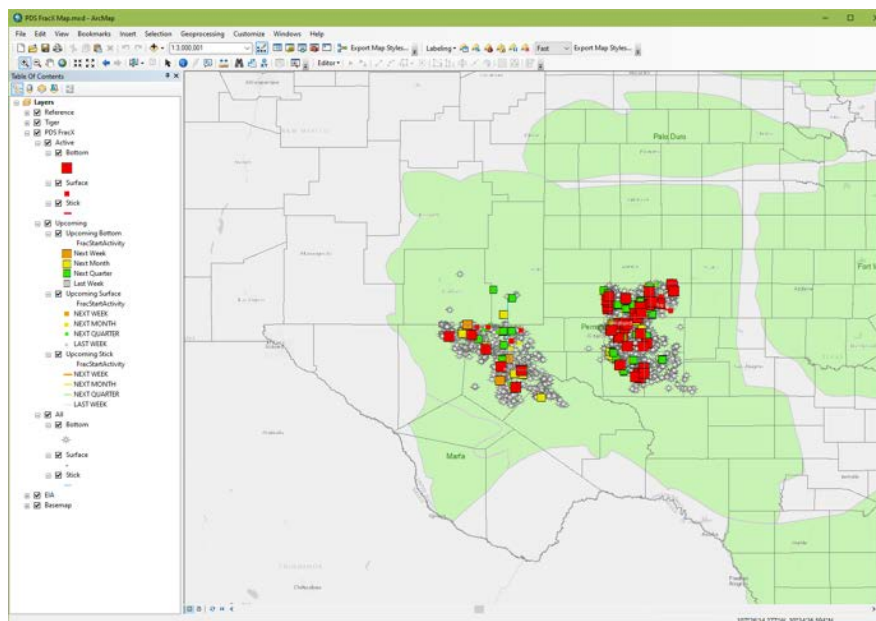
All referenced templates are in the 'PDS\FracX' folder located inside the master Conduit file folder. Please check with your administrator for the specific Conduit folder location.

ARCMAP / ARCGIS PRO

The Conduit for PDS Frac X data comes complete with a ready-to-run Esri ArcMap template for all your entitled data. These datasets are maintained in SQL Server Spatial tables and are performance-tuned and tested for ArcMap, ArcGIS Pro, ArcGIS Server, and Portal. The template includes Active and Upcoming flags for highlighting nearby activities.

PDS FRACX MAP.MXD

The ArcMap template includes a print layout in the document for ANSI E (34" x 44") size. There is also a ArcMap 10.3 version template supplied.



PDS FRACX MAP.APRX

The ArcGIS Pro template loads the same data as the ArcMap template pre-connected to the PDS FracX database.

PDS FRAC INTERFERENCE EXCHANGE DATA FOR EXCEL

The Conduit for PDS Frac X data comes complete with an auto-updated Microsoft Excel template for the Frac Exchange Schedule in your operating areas. This Excel document is updated daily in SQL Server and refreshes automatically upon launching the template.

PDS FRACX SCHEDULE.XLSX

ID	Region	State	County	Operation	WellName	WellID	FracStartDate	FracEndDate	SurfaceLatitude	SurfaceLongitude	BottomLatitude	BottomLongitude	TVD	LayerFormation
1	PMI	Texas	Reagan	Earthstone	Malone Unit 1-3 #1A	4238940265	2019-01-16	2019-01-28	31.327101	-101.462794	31.359215	-101.46303	7300	Wfmp A
2	PMI	Texas	Upton	Earthstone	Ratliff 9-7 A #2BU	4246141022	2019-01-30	2019-02-13	31.348664	-101.823542	31.319197	-101.8241	8603	Wfmp Lower B
3	PMI	Texas	Upton	Earthstone	Ratliff 9-7 A #1BL	4246141021	2019-01-31	2019-02-13	31.348664	-101.823405	31.319253	-101.825125	8862	Wfmp Upper B
4	PTX	Texas	Ward	Abraxas	CREOSOTE 86 #302H	4247537667	2019-02-12	2019-03-01	31.6153424	-103.141433	31.6190522	-103.1262372		
5	PTX	Texas	Ward	Abraxas	CREOSOTE 86 #302H	4247537668	2019-02-12	2019-03-01	31.6154211	-103.1414627	31.6199166	-103.1265591		
6	PTX	Texas	Winkler	Abraxas	HACKBERRY 11-201H	4249534179	2019-03-18	2019-04-30	31.7535898	-103.2088435	31.766145	-103.2141253		
7	PTX	Texas	Loving	Oxy	BOXWOOD 55-1-12 UNIT 1H	4230133182	2019-03-19	2019-03-28	31.9770561	-103.7079081	31.9564836	-103.7083339		
8	PTX	Texas	Reeves	Oxy	THUNDERDOME 54-4-24 UNIT 1H	4238936216	2019-03-20	2019-04-03	31.579473	-103.6242563	31.5495196	-103.6207725		
9	PTX	Texas	Loving	Oxy	GOLDENEYE 54-2-3 UNIT A 1H	4230134205	2019-03-26	2019-04-05	31.8749229	-103.6490918	31.8977793	-103.6491138		
10	PTX	Texas	Loving	Oxy	REVENTADOR 29-27 UNIT 1H	4230134200	2019-03-29	2019-04-17	31.7686675	-103.4401852	31.7931131	-103.4511377		
11	PTX	Texas	Loving	Oxy	MAUNA LOA 29-27 UNIT 1H	4230134206	2019-03-29	2019-04-14	31.7869474	-103.4402183	31.793779	-103.4492144		
12	PTX	Texas	Loving	Oxy	BOXWOOD 55-4-12 UNIT 2H	4230133580	2019-03-30	2019-04-09	31.9781411	-103.7036882	31.9564588	-103.701871		
13	PTX	Texas	Reeves	Oxy	SHOSHONI 54-4-35 1HR	4238935898	2019-04-04	2019-04-10	31.54846	-103.6383969	31.5349975	-103.6377009		
14	PTX	Texas	Loving	Oxy	BOXWOOD 55-1-12 UNIT 4H	4230133582	2019-04-11	2019-04-11	31.9781419	-103.703881	31.9564754	-103.7061975		
15	PTX	Texas	Loving	Oxy	COTTONWOOD 55-1-14 UNIT 4H	4230134227	2019-04-11	2019-04-24	31.9574296	-103.7338113	31.98533	-103.7318048		
16	PTX	Texas	Ward	Oxy	REFRID 34-187 UNIT 1H	4247537746	2019-04-15	2019-05-04	31.5091599	-103.3677108	31.4868857	-103.3912927		
17	PTX	Texas	Reeves	Oxy	YETI STATE 56-2-45 UNIT 2H	4238937609	2019-04-17	2019-05-10	31.7731547	-103.868886	31.7958242	-103.870544		
18	PTX	Texas	Reeves	Oxy	YETI STATE 56-2-45 UNIT 3H	4238937612	2019-04-18	2019-05-10	31.7730278	-103.868416	31.7958257	-103.8680655		
19	PTX	Texas	Reeves	Oxy	YETI STATE 56-2-45 UNIT 4H	4238937613	2019-04-18	2019-05-10	31.7731562	-103.8687902	31.7958272	-103.8685587		
20	PMI	Texas	Midland	Chevron	Scharbauer C 0021WB	4232942604000	2019-04-20	2019-06-16	31.90777	-102.155338	31.87781	-102.149	9600	
21	PMI	Texas	Midland	Chevron	Scharbauer C 0022LS	4232942605000	2019-04-20	2019-06-16	31.907704	-102.155517	31.87781	-102.149	9600	
22	PMI	Texas	Midland	Chevron	Scharbauer C 0023WB	4232942606000	2019-04-20	2019-06-16	31.907638	-102.155496	31.87848	-102.146	9600	
23	PMI	Texas	Midland	Chevron	Scharbauer C 0024LS	4232942607000	2019-04-20	2019-06-16	31.907571	-102.155441	31.87848	-102.146	9090	
24	PMI	Texas	Midland	Chevron	Scharbauer C 0025WB	4232942608000	2019-04-20	2019-06-16	31.907505	-102.155454	31.87916	-102.144	9600	
25	PMI	Texas	Midland	Chevron	Scharbauer C 0026LS	4232942609000	2019-04-20	2019-06-16	31.907438	-102.155441	31.87916	-102.144	9080	
26	PTX	Texas	Reeves	Oxy	KAYCEE STATE 57-3-33 UNIT 4H	4238937392	2019-04-21	2019-04-30	31.7003707	-103.9675931	31.6794044	-103.96387		
27	PTX	Texas	Loving	Oxy	BOXWOOD 55-1-12 UNIT 3H	4230133581	2019-04-22	2019-05-04	31.9781416	-103.7037833	31.9564671	-103.7040343		
28	PTX	Texas	Loving	Oxy	TREME 55-1-32 UNIT 2H	4230134238	2019-04-26	2019-05-09	31.9136906	-103.7791262	31.9416052	-103.780431		
29	PTX	Texas	Pecos	XTO	El Kabong 48-17-8 302H	42371397850000	2019-04-26	2019-05-28	31.14229759	-103.1451066	31.1720503	-103.1478134		
30	PTX	Texas	Pecos	XTO	El Kabong 48-17-8 703H	42371397860000	2019-04-26	2019-05-28	31.14221339	-103.1451056	31.1720476	-103.1475237		
31	PTX	Texas	Pecos	XTO	El Kabong 48-17-8 704H	42371397900000	2019-04-26	2019-05-28	31.14213022	-103.1451048	31.1720344	-103.1468072		
32	PMI	Texas	Martin	Concho	TED JOHNSON 201H	42317415130000	2019-04-29	2019-05-14	32.1814655	-102.1399766	32.1545508	-102.1284934		
33	PMI	Texas	Martin	Concho	TED JOHNSON 204H	42317415140000	2019-04-29	2019-05-14	32.1815302	-102.1399658	32.1545508	-102.1284988		
34	PTX	Texas	Pecos	XTO	El Kabong 48-17-8 301H	42371397860000	2019-04-30	2019-05-25	31.14222	-103.147466	31.17202	-103.148393		
35	PTX	Texas	Pecos	XTO	El Kabong 48-17-8 701H	42371397870000	2019-04-30	2019-05-25	31.14211736	-103.1476624	31.1720445	-103.1501736		
36	PTX	Texas	Pecos	XTO	El Kabong 48-17-8 702H	42371397880000	2019-04-30	2019-05-25	31.14204707	-103.1451037	31.1720585	-103.1487085		
37	PTX	Texas	Reeves	Oxy	KAYCEE STATE 57-3-33 UNIT 3H	4238937390	2019-05-01	2019-05-10	31.7003722	-103.9678927	31.6793383	-103.9676201		
38	PTX	Texas	Culberson	Chevron	DR STATE WISE UNIT 1 0081WA	42109333580000	2019-05-01	2019-05-30	31.9366221	-104.252621	31.909167	-104.255291	8400	
39	PTX	Texas	Culberson	Chevron	DR STATE WISE UNIT 1 0082WA	42109333590000	2019-05-01	2019-05-30	31.9366222	-104.252541	31.909181	-104.253164	8500	
40	PTX	Texas	Culberson	Chevron	DR STATE WISE UNIT 1 0083WA	42109333610000	2019-05-01	2019-05-30	31.936622	-104.252446	31.909195	-104.251038	8400	
41	PTX	Texas	Culberson	Chevron	DR STATE WISE UNIT 1 0084WA	42109333690000	2019-05-01	2019-05-30	31.936622	-104.252379	31.909208	-104.248911	8600	
42	PTX	Texas	Winkler	Concho	MULLIGAN UNIT 1001H	42495342550000	2019-05-01	2019-05-14	31.85997416	-103.2672658	31.88605291	-103.2780634		

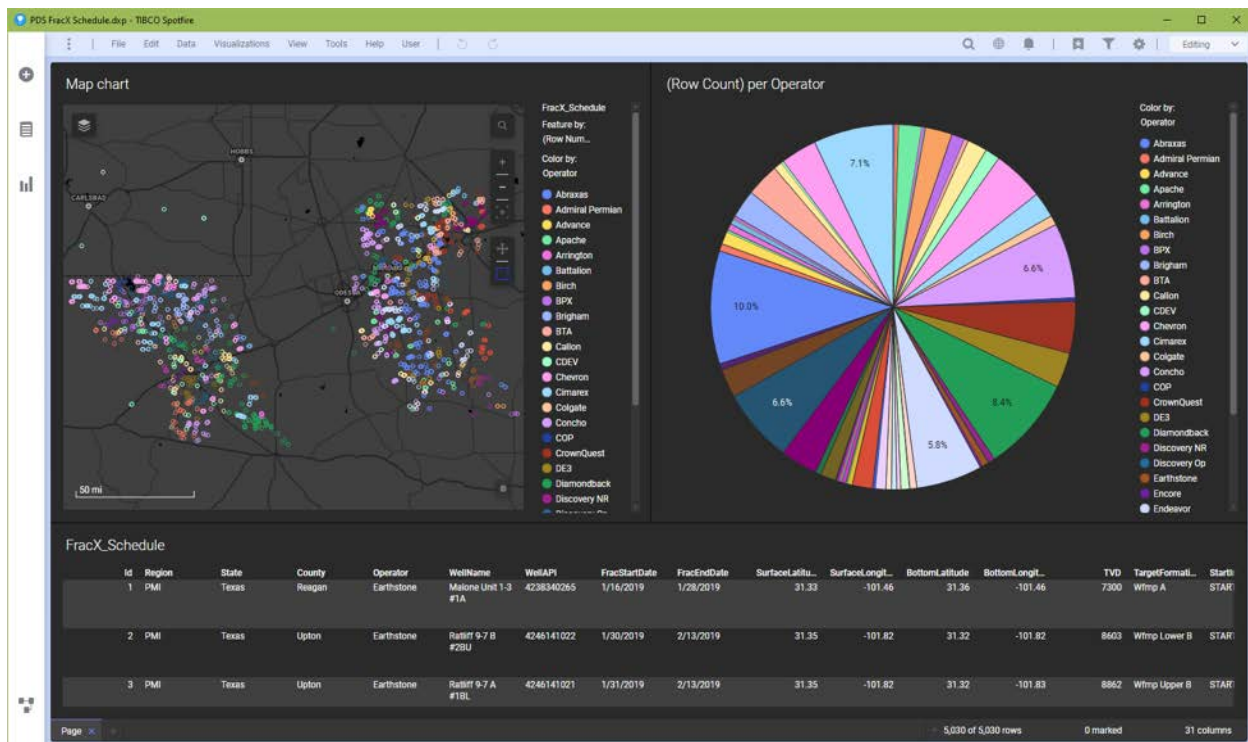


PDS FRAC INTERFERENCE EXCHANGE DATA FOR SPOTFIRE

The Conduit for PDS Frac X provides a Tibco Spotfire template for the Frac Exchange Schedule in your operating areas. This template loads and automatically refreshes the data in Spotfire upon launching the template.

PDS FRACX SCHEDULE.DXP

This template loads all available schedule records.



SUPPORT EMAIL:

support@conduitresources.com

