



1600 Stout Street, Suite 1230
Denver, Colorado 80202
Office 720.402.3875

www.conduitresources.com

WELCOME TO THE ENERGY DATA CONDUIT

Conduit Resources provides relevant data management software and analytics solutions for the energy industry. Our Products enable oil and gas industry leaders to explore data trends from all available data sources, including Commercial, Public, and Private sources, all while improving operational decisions. The Conduit empowers your workforce with evergreen access to company proprietary and subscription data on your network, fully integrated with your systems. Conduit Resources is a dynamic company gaining a reputation for excellence in energy data management with a rapidly growing market share.



Strategic Technology Partners



THE ENERGY DATA CONDUIT

Data Integrations That Work

We provide comprehensive data management solutions for all your commercial vendor subscription and company proprietary data. Your entire company, from field to executives, will use the same ever-green data with no per-seat or per-use charge. The Conduit delivers an analytics and spatially enabled SQL Server database with pre-built templates. We deliver out-of-the-box and configurable integrations for geoscience, geophysics, and engineering applications.

BUILT FOR SPEED, BUILT FOR ANALYTICS, BUILT FOR MAPPING

Our Well Finder application offers fast and simple access to Well, Completion, and Production data. We are strategic partners with Tibco and ESRI which allows us to provide full support for Spotfire, ArcMap, ArcGIS Pro, and Portal.

Unique to the industry is our ground-breaking Well Log Registry application suite. This solution searches the network to find and catalog logs that your company has acquired over the years. This is the fastest way to find the proprietary and local logs you need. Now you can find specific curves, such as gamma rays, available in any area of interest.

BUILT ON AN ENTERPRISE PLATFORM

We build our products using Microsoft technologies including Active Directory, Azure, .NET, and SQL Server. Our solutions are meant to be plug and play with your environment and are easily supported by IT departments.

- We will take care of all installations, maintenance, upgrades, break fixes, and more. This is at no extra cost, covered by our normal subscription agreement.
- All solutions self-recover if the vendor is offline or if your system is offline for any reason.
- Our cloud-based Mission Control suite monitors all systems ensuring optimal performance. These systems and our support team earn us our reputation for excellence.

We support clients in every type of environment, including:

- Amazon AWS
- Hosted
- Hybrid / Colocation
- Microsoft Azure
- On Premise

PRE-BUILT & AUTOMATED INTEGRATIONS

Configurable integrations deployed in only a few hours. Data is formatted for your specific needs and applications. Integrations include:

➤ **ARIES**

Direct database load including ACProperty, AC_Completion, and AC_Product tables. Complete project overwrite, blended with your propnums, individual columns blending, data loaded how you need it.

➤ **Petra / Kingdom**

Automated 297/298 downloads filtered for each project area on any schedule. Custom data, including our production aggregations exported and loaded into zone items when desired.

➤ **Harmony**

Custom database well header and production history views for each project area. Scheduled and automated SQL Server to Harmony data loads at night or over the weekend. Your Choice.

➤ **GeoGraphix**

Automated 297/298 downloads for each project area. Automatically loaded into each project with one scheduled task to download, move, and import the data into wellbase.

➤ **Petrel**

Custom CSV exports from the database specifically built for your project area and data needs. All files are generated on any time frame and available for project import.

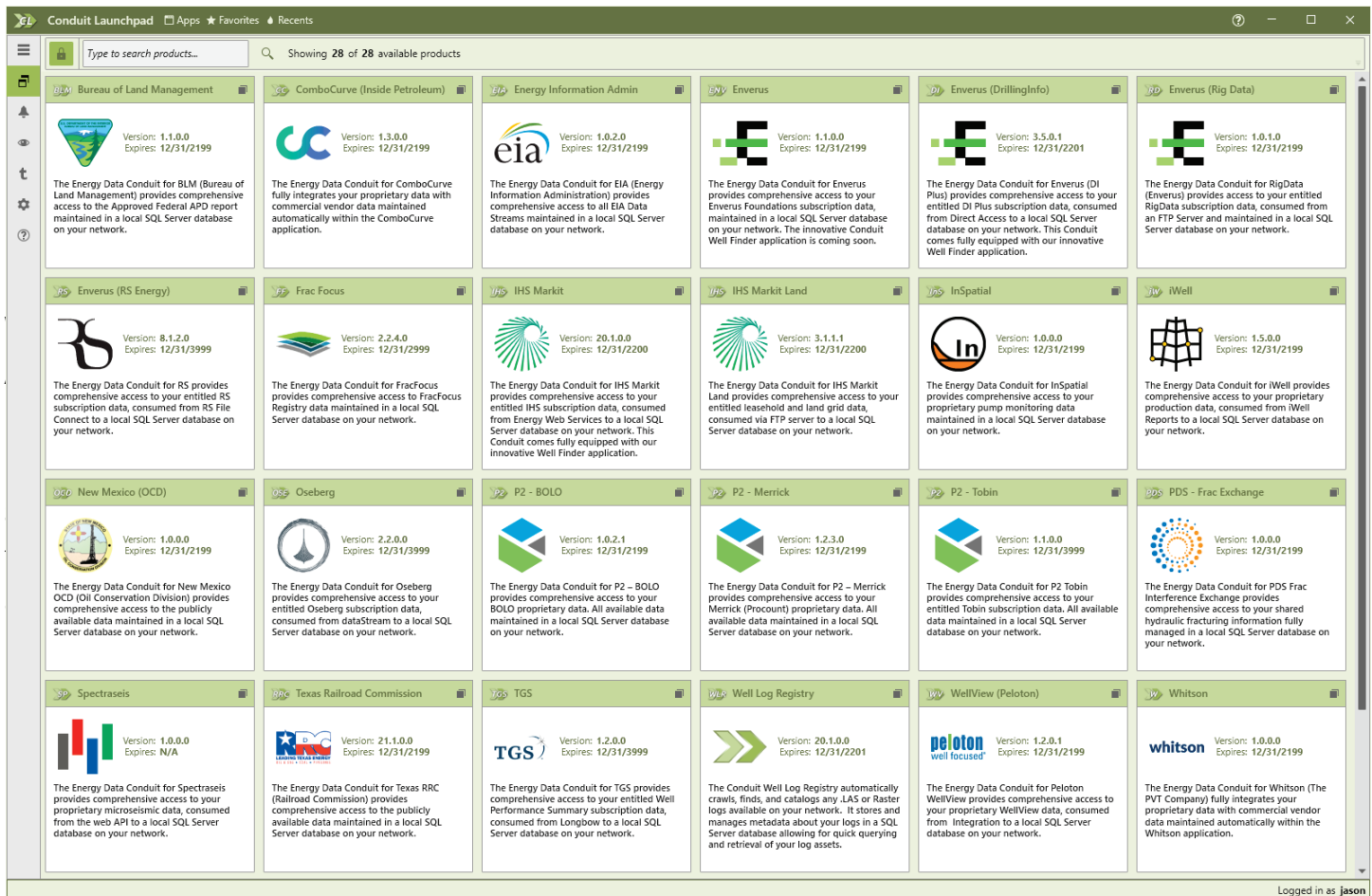
➤ **And More...**

WE HAVE AN ENERGY DATA CONDUIT AVAILABLE FOR IMMEDIATE DEPLOYMENT FOR ALL YOUR CRITICAL DATA SOURCES WITH...

- Comprehensive Access To Data In A Locally Managed SQL Server Database
- Automated Updates For A True Evergreen Solution
- Analytics And Mapping Enabled Out-Of-The-Box
- Conduit Control Monitoring To Maximize Uptime And Reliability
- Oil & Gas Specific Integrations For Accounting, Engineering, And Geoscience Applications

AVAILABLE PRODUCTS

ACCESS ALL CRITICAL DATA SOURCES FROM CONDUIT LAUNCHPAD!



Don't See What You Are Looking For?

Contact Sales@ConduitResources.com To Discuss Your Data Management Needs.

Conduit Commercial

Data management software and services for commercially available oil and gas data sets. Always up-to-date information from leading oil and gas specific data providers.

Conduit Private

Data management software and services for internal private and proprietary oil and gas data from leading oil and gas software providers.

Conduit Public

Data management software and services for public data sources. Always up-to-date information from both state and federal oil and gas regulatory agencies.

CONDUIT COMMERCIAL

COMMERCIAL PRODUCT OFFERINGS

Data management software and services for commercially available oil and gas data sets. Always up-to-date information from leading oil and gas specific data providers.



The Conduit for IHS Markit provides comprehensive and flexible access to your entitled data, including well, production, completion, permit and rig information. All data is easily searchable and exportable from our renowned WellFinder application.



The Conduit for Enverus Foundations provides comprehensive and flexible access to your entitled data, including well, production, and completion, permit, rig, activity, and market research data.



The Conduit for Drillinginfo provides comprehensive access to your entitled data, including well, production, completion, permit and rig information.



The Conduit for RigData provides access to your entitled RigData subscription data maintained in a local SQL Server database on your network.



The Conduit for RS Energy provides comprehensive and flexible access to your entitled data, including well, production, and completion data.



The Conduit for JKPC (James Knoblach Petroleum Consultants) provides comprehensive access to your entitled Appalachian Basin Horizontal Well information.



The Conduit for Oseberg provides comprehensive and flexible access to your entitled data, including Oklahoma production and lease information.



The Conduit for P2 Tobin provides comprehensive access to your entitled data, including land grid, lease, and well information.



The Conduit for PDS Frac Exchange provides comprehensive access to your shared hydraulic fracturing information locally maintained in a SQL Server database on your network.



The Conduit for Quandl provides comprehensive access to your entitled financial and economic data, consumed via web services to a local SQL Server database on your network.



The Conduit for TGS provides comprehensive access to your entitled data, consumed from Longbow™, including completion, production, and well information.

CONDUIT PRIVATE

PRIVATE PRODUCT OFFERINGS

Data management software and services for internal and proprietary oil and gas data from both cloud and local sources. Always up-to-date information from oil and gas accounting, engineering, remote monitoring, production, and well systems. We provide customizable solutions for integrating private information throughout your entire organization and data warehouse.



The Conduit Well Log Registry. A comprehensive well-log data management solution by Conduit Resources. Built from the ground up to find, manage, and retrieve all well-logs available on your network or workstations.



ComboCurve

Provides a modern cloud-based probabilistic reserves and economics platform.



Epic Lift

Provides a fully hosted plunger system that monitors all your plunger information in a cloud-based application.



InSpatial

Provides a fully hosted SCADA system that monitors all phases of a well's production lifecycle.



iWell

Provides a cloud-based monitoring system that tracks remote meter, pressure, wellhead, and tank information.



P2 BOLO

Provides hosted and/or cloud-based oil and gas accounting software for oil and gas investments and upstream companies.



P2 Merrick

Provides a cloud-based production volume management system that tracks meter, production, and tanks.



WellEz

Provides a cloud-based oil and gas accounting system specifically for oil and gas investment, mineral, and upstream companies.



WellView

Provides comprehensive access to your proprietary WellView data from the Peloton (SAAS) environment.



Whitson

Provides cloud-based petroleum engineering-related services, software, and training to oil and gas companies.

CONDUIT PUBLIC

PUBLIC PRODUCT OFFERINGS

Data management software and services for public oil and gas data sources. Always up-to-date information from both state and federal oil and gas regulatory agencies.



Bureau of Land Management (BLM)

data includes APD Permit Reports, PLSS land grid, and surface management agency mapping layers.



Energy Information Administration (EIA)

data includes time-series data streams, basin studies, and petroleum and natural gas facility mapping layers.



New Mexico OCD (Oil Conservation Division)

data includes Acreage, Production Volumes, Spacing Units, and Wells.



FracFocus Registry

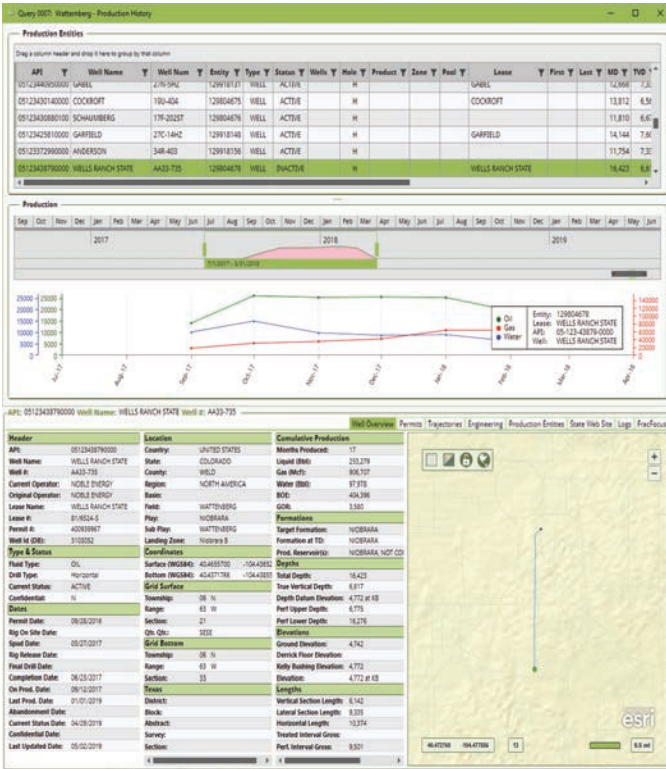
data including all Upload, Purpose, and Ingredient records complete with spatial geometries.



Texas RRC (Railroad Commission)

data includes Pending Completions, Pending Permits, Production Data Query, and Full Wellbores.

WELL FINDER APPLICATION WITH STATE MODULE



- The Well Finder application allows for quick and simple data access and is purpose-built for IHS Markit and Drillinginfo.
- The ability to query, view, and export data to common formats.
- Spatial queries and result sets available.
- Oil and gas specific tools, such as the ability to load an API list to query for recent activity and updates.
- Common data types include: Wells, Permits, Geology, Perforations, Tests, Treatments, Directional Surveys, Completions, and Production.

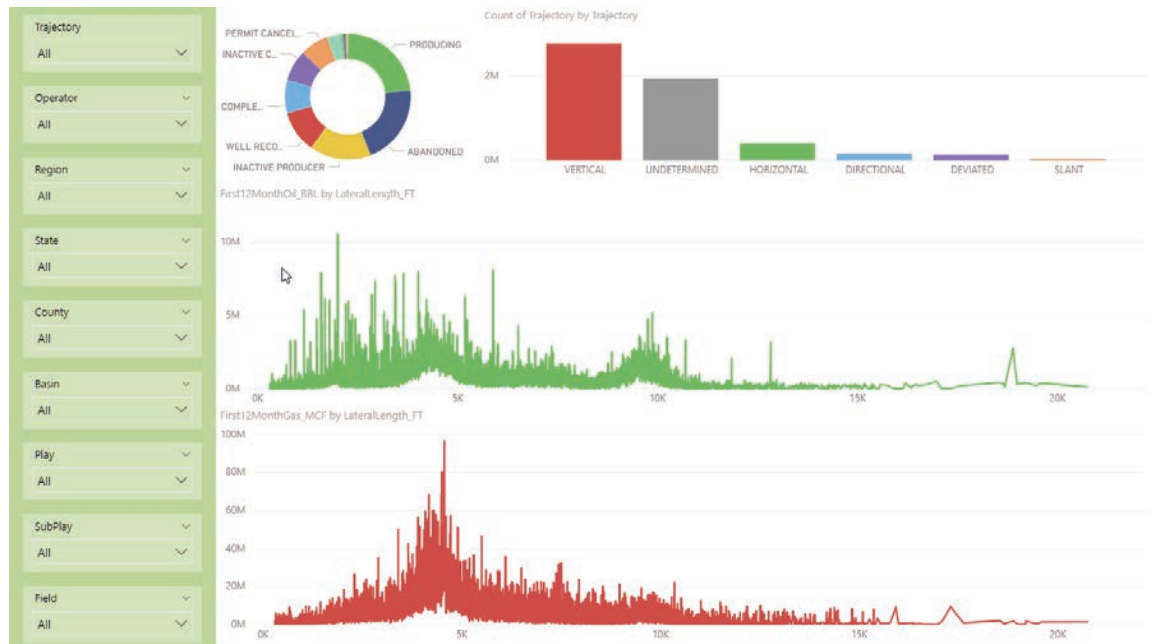
THE STATE MODULE - DIRECT REGULATORY WEBSITE ACCESS

- Well Finder contains the state website module; granting direct access to oil and gas regulatory websites.
- Loads websites with a selected well from Well Finder, providing access to state data.
- Access available for 20+ predominant oil and gas producing states.
- Direct access to the state maintained web mapping portal.

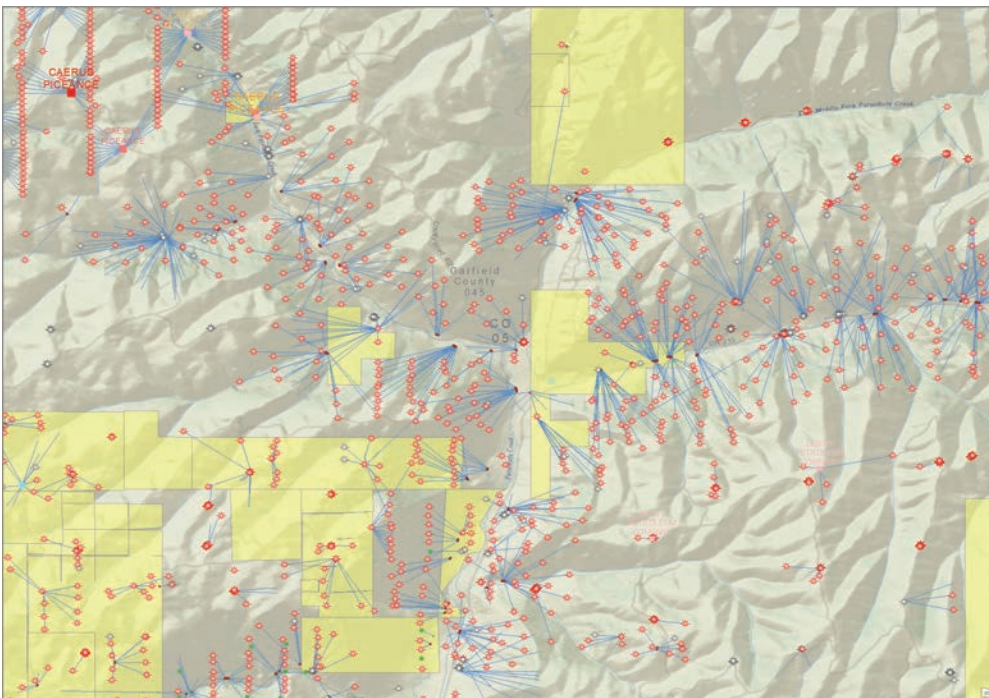
The screenshot shows the 'COGIS - WELL Information' page for well API # 05-123-43879. It includes a 'Scout Card' with well name, status, and location. Below this, there are sections for 'Well Name/No.', 'Operator', 'Status Date', 'Facility ID', 'County', 'Field', 'Planned Location', 'As Drilled Location', 'Job Date', and 'Job End Date'. A 'Wellbore Data for Sidetrack #00' section provides detailed wellbore specifications, including permit information, formation and spacing, casing, cement, and completion status.

ANALYTICS READY

- Spotfire
- Tableau
- Power BI
- Excel
- More



SPATIALLY ENABLED FOR MAPPING



- SQL Server Spatial
- ArcGIS Server
- ArcMap
- ArcGIS Pro
- ArcSDE
- QGIS / GeoServer



Contact & Support

www.conduitresources.com

1600 Stout Street, Suite 1230
Denver, Colorado 80202
Office 720.402.3875

sales@conduitresources.com

Copyright © Conduit Resources
All Rights Reserved

