

# ENERGY DATA CONDUIT WELL LOG REGISTRY

## GENERAL

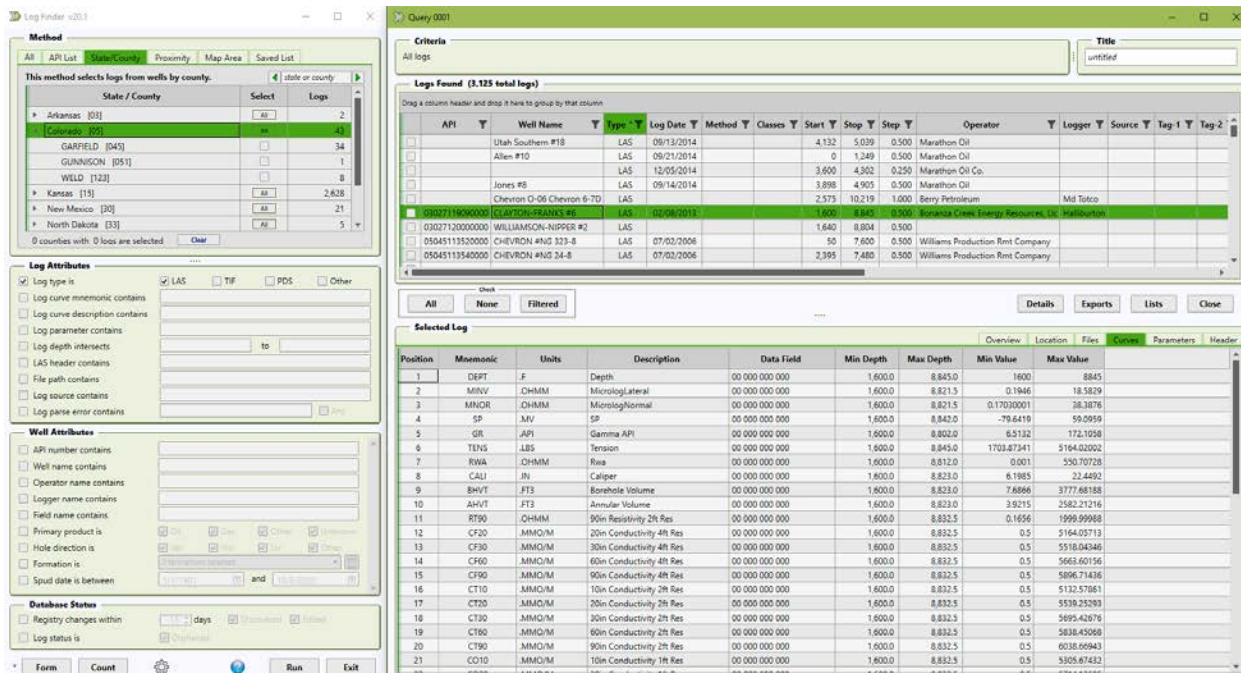
A comprehensive well log data management solution by Conduit Resources. Built from the ground-up to find, manage, and retrieve all well logs available on your network or workstations.

## CONDUIT SYSTEMS OF ACCESS

All referenced templates are in the 'WellLogRegistry' folder located inside the master Conduit file folder. Please check with your administrator for the specific Conduit folder location.

## LOG FINDER APPLICATION

The Log Finder is your single source for searching all the logs contained within the Well Log Registry. This includes all well, location, parameter, curve, and source file information. Log Finder is fully integrated with both our Well Finder applications for IHS Markit and Enverus Drillinginfo.



The screenshot displays the Log Finder v20.1 application interface. On the left, there are several panels for filtering logs:

- Method:** A list of states/counties with checkboxes and log counts. Colorado is selected with 41 logs.
- Log Attributes:** Checkboxes for log type, curve, parameter, depth, header, file path, source, and parse error.
- Well Attributes:** Checkboxes for API number, well name, operator, logger, field, primary product, hole direction, formation, and spud date.
- Database Status:** Checkboxes for registry changes and log status.

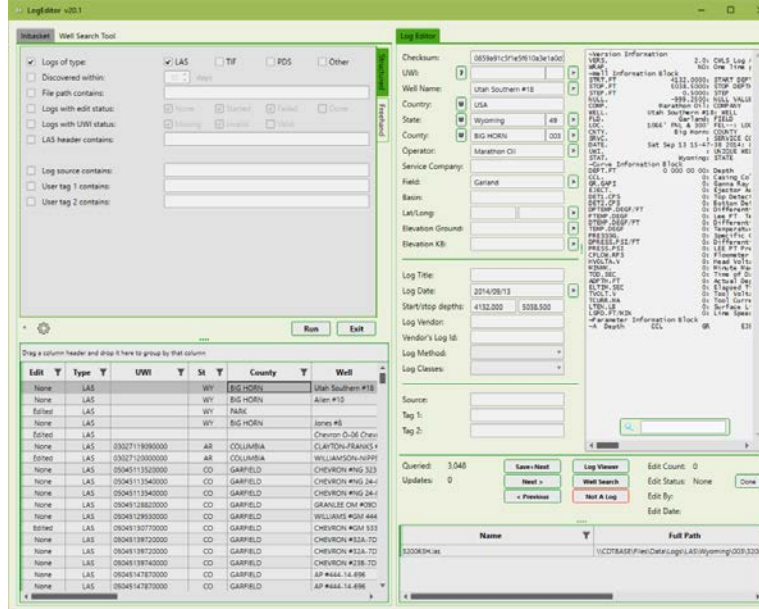
The main window shows search criteria and a table of logs found (3,125 total logs). The table includes columns for API, Well Name, Type, Log Date, Method, Classes, Start, Stop, Step, Operator, Logger, Source, Tag-1, and Tag-2. A 'Selected Log' table is also visible at the bottom, showing detailed data for a specific log entry.

API	Well Name	Type	Log Date	Method	Classes	Start	Stop	Step	Operator	Logger	Source	Tag-1	Tag-2
	Utah Southern #18	LAS	09/13/2014			4,132	5,039	0.500	Marathon Oil				
	Allen #10	LAS	09/21/2014			0	1,349	0.500	Marathon Oil				
	Jones #8	LAS	12/05/2014			3,805	4,982	0.250	Marathon Oil Co.				
	Chevron O-06 Chevron 6-7D	LAS	09/14/2014			3,898	4,905	0.500	Marathon Oil				
	05027119060000 CLAYTON-FRANCS #6	LAS	02/09/2012			1,600	8,842	0.500	Borland Creek Energy Resources, Lc	Halliburton			
	03027120000000 WILLIAMSON-NIPPER #2	LAS				1,640	8,804	0.500					
	05045113520000 CHEVRON #NG 323-B	LAS	07/02/2006			50	7,600	0.500	Williams Production Rmt Company				
	05045113540000 CHEVRON #NG 24-B	LAS	07/02/2006			2,395	7,480	0.500	Williams Production Rmt Company				



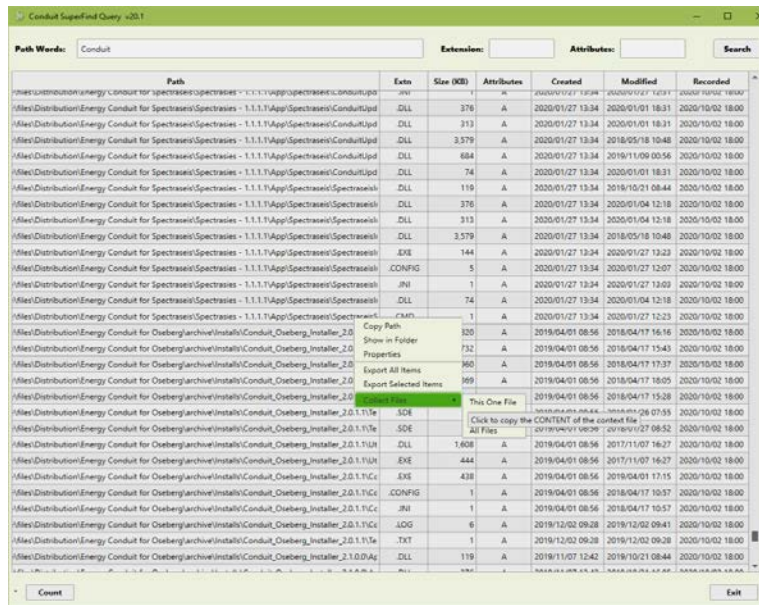
## WELL LOG EDITOR APPLICATION

The Log Editor program is the industry's most advanced log metadata editing tool available. This allows you to correct and fill in the gaps of all log header information with access to the well database of your choice.



## SUPERFIND APPLICATION

SuperFind is the foundation and engine behind the Well Log Registry. A complete network scanning utility for cataloging all network and workstation file folders as guided by the application administrator.

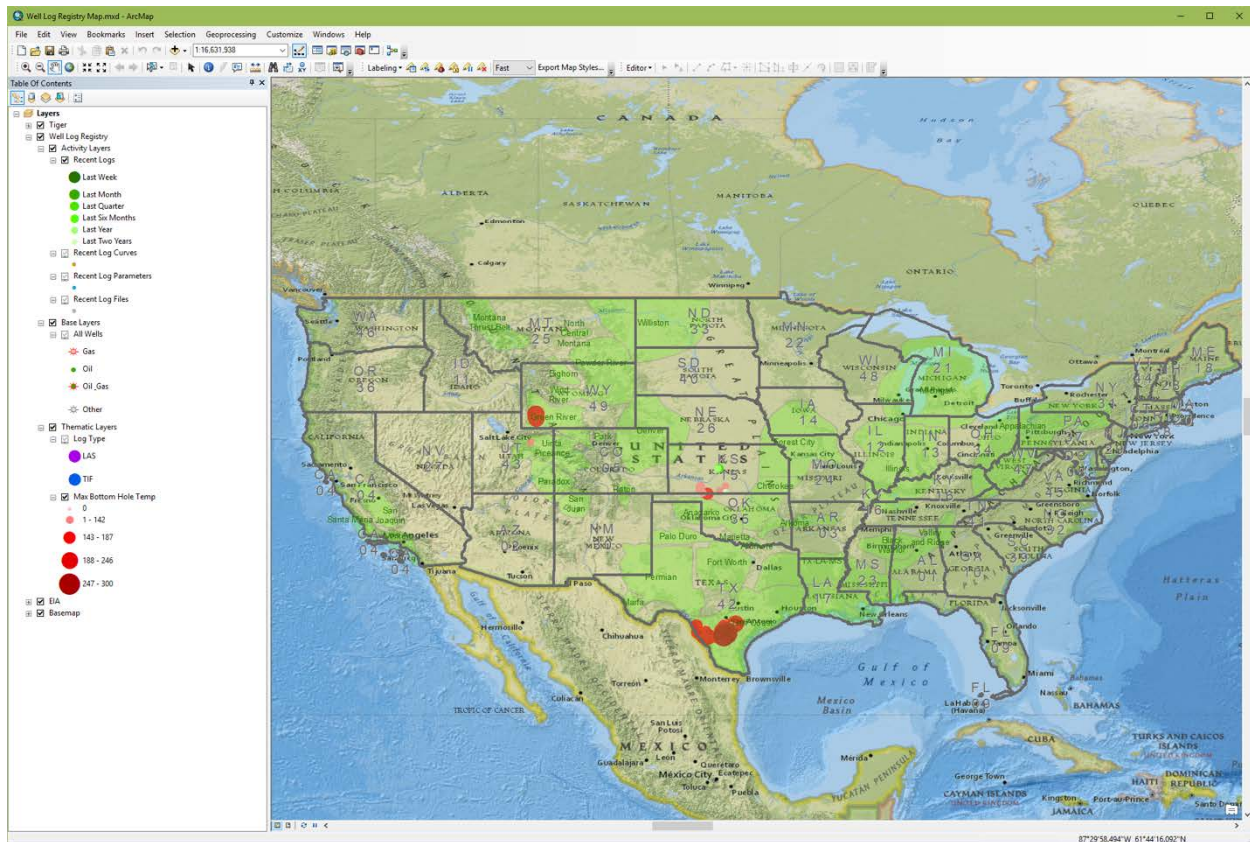


## WELL LOG REGISTRY INFORMATION IN ARCMAP

The Conduit Well Log Registry data comes complete with a ready-to-run Esri ArcMap template displaying recent activity for log curves, log files, log parameters and logs.

### WELL LOG REGISTRY MAP.MXD

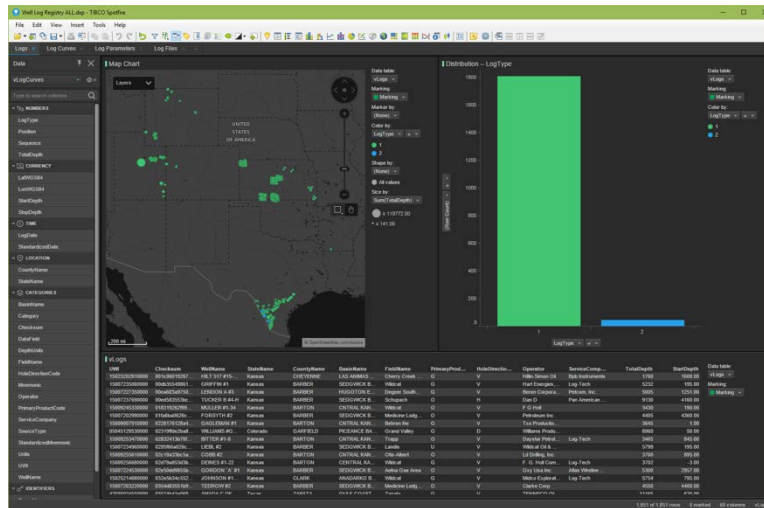
The ArcMap template includes a print layout in the document for ANSI E (34" x 44") size.



## WELL LOG REGISTRY INFORMATION IN EXCEL & SPOTFIRE

The Conduit Well Log Registry data comes complete with auto-updated Microsoft Excel and Tibco Spotfire templates for the log curves, log files, log parameters, and logs.

## WELL LOG REGISTRY ALL.DXP



## WELL LOG REGISTRY ACTIVITY.XLSX

Well ID	Checkmate	WellName	StateName	CountyName	StateAbbrev	FieldName	Operator	ServiceComp.	TotalDepth	Data Date
100072200000	0000000001	WELL 01	Kansas	OSAGE	KS	WELL 01	WELL 01	WELL 01	1000	10/10/10
100072200000	0000000002	WELL 02	Kansas	OSAGE	KS	WELL 02	WELL 02	WELL 02	1000	10/10/10
100072200000	0000000003	WELL 03	Kansas	OSAGE	KS	WELL 03	WELL 03	WELL 03	1000	10/10/10
100072200000	0000000004	WELL 04	Kansas	OSAGE	KS	WELL 04	WELL 04	WELL 04	1000	10/10/10
100072200000	0000000005	WELL 05	Kansas	OSAGE	KS	WELL 05	WELL 05	WELL 05	1000	10/10/10

Support Email:  
[support@conduitresources.com](mailto:support@conduitresources.com)

